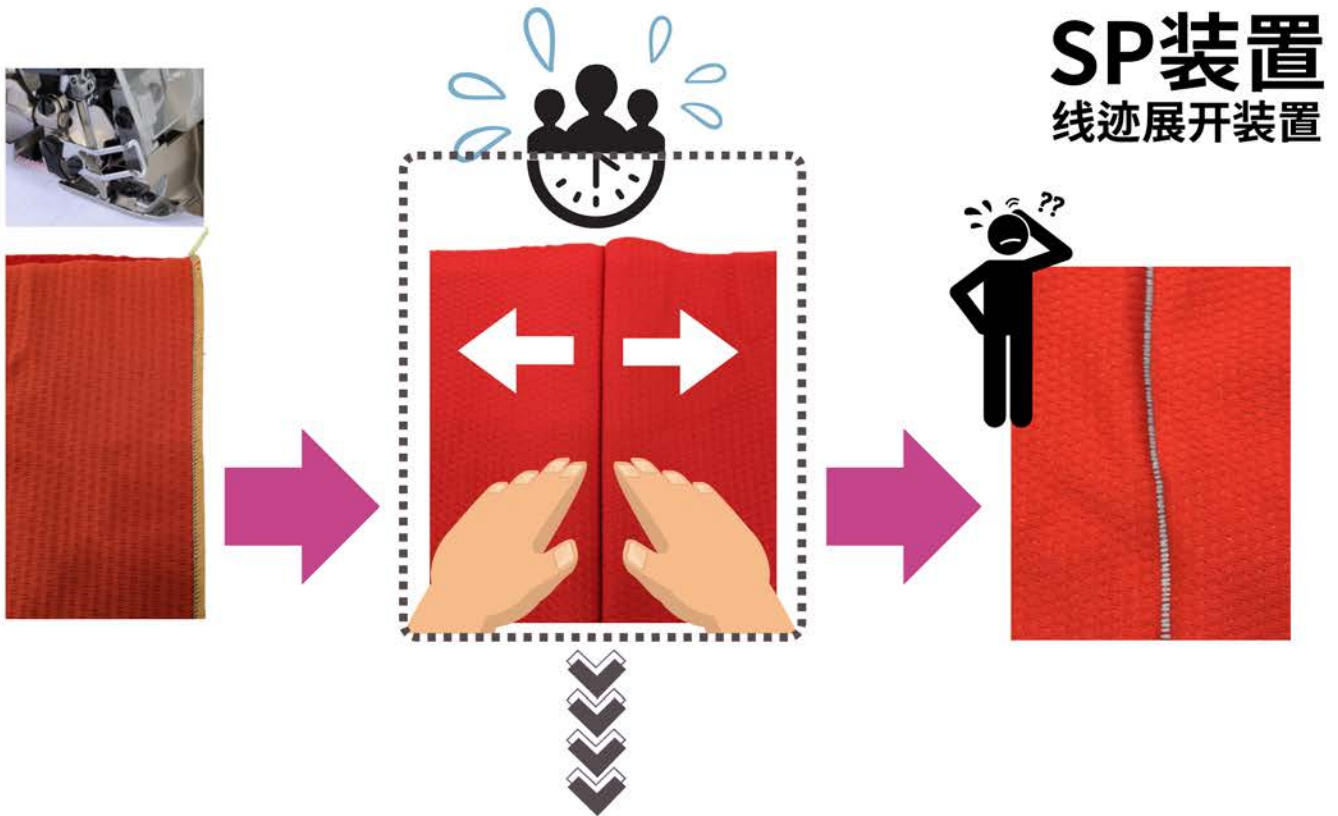


SEAM OPENER DEVICE



 **スピーディーで安定した品質に!** 

The process of opening the fabric evenly after sewing can be completed quickly and evenly.
M形縫和折边縫 縫制中不可或缺的縫后开线迹工序可快速





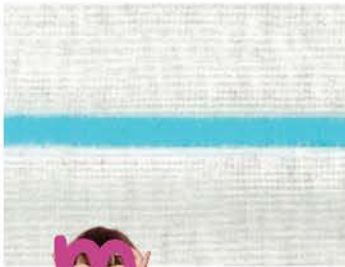
肩継ぎ
Shoulder joint 肩部接缝

袖付け
Sleeve attaching 袖部接缝

脇縫い
Side seaming 腋部侧缝



裾引き
Blindstitch Hemming
折边缝



MX5203-M03/323-4/KS0E/D232/Y2261
M縫い仕様 1本針オーバーロックミシン
M-stitch specification, 1-needle, overedger machine
M縫式样 单针包缝缝纫机



PHN-200/EX5105-12/223N-4/KS379/PT
裾引きユニット
(1本針シリンダーベッド型オーバーロックミシン搭載)
Blindstitch Hemming Unit
(equipped with 1-needle, cylinder bed, overedger machine)
下摆折缝自动组装机 (搭载单针小方头式包缝缝纫机)

