



PEGASUS®

HG Series

W3600P series
Models: HG3A

INSTRUCTIONS
Hemming guide device

INSTRUCTIONS

Hemming guide device

Thank you for purchasing Pegasus' labor saving device.

Study this manual very carefully before beginning any of the procedures and then use the device correctly and safely

Keep this manual in a convenient place for quick reference when needed.

CONTENTS

1.Introduction	1
2.Indications of dangers, warnings and cautions	1 - 2
3.Safety precautions	2 - 3
4.Notes for each procedure	3 - 4
Applications and performance	5
Installation	
Installing the parts and the air tubes	6
Installing the guide rollers	7
Adjustment	
Adjusting the guides	8

Be sure to study very carefully **for safety.**

1. Introduction

- This manual describes the instructions for using this device safely.
- Study this manual very carefully and understand fully how to operate, check, adjust and maintain the labor saving device before beginning any of the procedures.
- You always perform operations close to moving parts such as needles when using industrial sewing machines. Therefore you have to keep in mind you could easily touch them. To prevent accidents, it is essential that you use the safe products supplied by Pegasus correctly.
All the people who will use the sewing machines must study this manual and the instruction manual for sewing machines very carefully and then take necessary safety measures before beginning any of the procedures.

2. Indications of dangers, warnings and cautions




To prevent accidents, indications (symbols and/or signs) which show the degree of danger are used on our products and in this manual. Study the contents very carefully and follow the instructions.

Indication labels should be found easily.











Attach new labels when they are stained or removed.

Contact our sales office when new labels are needed.

Symbols, signs and/or signal words which attract users' attention

	DANGER	Indicates an immediate hazard to life or limb.
	WARNING	Indicates a potential hazard to life or limb.
	CAUTION	Indicates a possible hazard that could result in injury or damage.

Symbols and messages

	Be sure to follow the instructions when you operate the machine and/or labor saving device.
	If you use the machine and/or labor saving device incorrectly, you may get an electrical shock.
	If you use the machine and/or labor saving device incorrectly, your hands and/or fingers may be injured.
	If you use the machine and/or labor saving device incorrectly, you may cause fire.
	Never do this.
	Unplug the machine and shut off the power when checking, adjusting and/or repairing the machine and/or labor saving device, or when lightning may strike.
	Be sure to connect the ground.
	If you use the machine and/or labor saving device incorrectly, your fingers and/or hands may be caught in them, causing trouble.
	If you use the machine and/or labor saving device incorrectly, you may burn yourself.
	Read carefully before use. Keep for future reference.

3. Safety precautions

① Applications, purpose

The labor saving device is designed to increase quality and productivity according to your needs. Therefore never use the device for the applications, which may defeat the above purpose.

② Circumstances

Some circumstances when you are using the labor saving device may affect its life, function, performance, and safety.



For safety, do not use the labor saving device under the circumstances below.

1. Do not use the device near objects which make noises such as a high-frequency welder, etc.
2. Do not use or store the device in the air which has vapor from chemicals, or do not expose the device to chemicals.

3. Do not leave the device outside, in high temperatures or the direct sun.
4. Do not use the device in high humidity or ambient temperatures which may affect them.
5. Do not use the device on the condition that the voltage fluctuation range is more than $\pm 10\%$ of the rated voltage.
6. Do not use the device at the place where the supply voltage specified for the control motor cannot be properly obtained.
7. Do not use the device at the place where the air supply specified for the device cannot be properly obtained.
8. Do not expose the device to the water.

③ Safety measures



(1) Safety precautions when you perform maintenance on the labor saving device.

- When performing maintenance such as when checking, repairing, cleaning the labor saving device, turn off the power, disconnect the power plug and press the machine treadle in order to make sure the machine does not run.

If you have to perform maintenance on the machine and/or labor saving device with the power on, always be careful because the machine and/or device could start operating unexpectedly.

To prevent accidents caused by incorrect operation, you should establish your own procedures for safe operation and follow them.

- Only authorized technicians are allowed to perform routine daily maintenance and/or repair the machine and/or device.



- Do not modify the machine and device yourself.

※ Consult your local Pegasus' sales office or representative for modification



(2) Before operating the device

- Before operating the device, check the machine head, machine unit and device to make sure they do not have any damage and/or defects.

Repair or replace any defective parts immediately.

- To prevent accidents, always make sure the safety covers and safety guards are properly secured.
Never remove the safety covers and safety guards.



(3) Training

- To prevent accidents, operators and service/maintenance personnel must have proper knowledge and skills for safe operation.

To ensure so, managers must design and conduct training for these people.

4. Notes for each procedure



CAUTION

① Unpacking

The machine and device are packed in boxes (and plastic bags) in the factory before shipment. Unpack the boxes and bags properly and follow the instructions shown on them.

② Installation, preparation



CAUTION

Air tube connections

1. Always turn off the power first and then connect the air tubes to the joints. Be sure to connect all the air tubes before connecting them to the air compressor.

2. When connecting the air tubes to the joints, be sure to insert the joints to the proper depth of the air tubes and fasten securely.
3. Do not allow excessive force to be exerted on the air tubes while using the device.



4. Do not bend the air tubes too much.

5. If necessary, protect the air tubes by positioning them safely and/or using the cover.



6. Do not use staples to secure the air tubes. Otherwise it may cause damage.



WARNING

Cord connections



1. When connecting the power cord, be sure to turn off the power and disconnect the power plug.



2. Check the voltage designation to make sure the power relay cord matches the local supply voltage. The use of wrong cord may cause damage to parts and/or fire.

3. Do not allow excessive force to be exerted on the cords while using the device.



4. Do not bend the cords too much.

5. Confirm that the cord is at least 25 mm away from moving part of the machine and/or the device when you connect the cord.

6. If necessary, protect the cords by positioning them safely and/or using the cover.



7. Do not use staples to secure the cords. Otherwise it may cause damage.

Ground



1. Connect each of the ground wires in the sewing machine system to the ground terminal. Do not connect one devices' ground wire to another devices'.



2. Connect the ground wires securely to the indicated ground points on the machine head.




WARNING

③ Before operation

1. Check the cords, connector and air lines to make sure they do not have any damage, disconnections or tangles and then turn on the power.
2.  Never bring your hands and/or any part of your body close to the needle and pulley when turning on the power.
3. Well-trained operators and technicians who studied this manual and the instruction manual very carefully are allowed to use the machine with the labor saving device.
4.  Study the contents on "2. Indications of dangers, warnings and cautions" very carefully and then provide users with safety training as required.


WARNING

④ Precautions for work and operation

1.  The area near the presser foot is very dangerous during sewing. Do not bring your hands and/or any part of your body close to the presser foot.
2. To prevent accidents, be careful that any foreign matter such as water, other liquids or metals do not get into the device.
3. Wear clothes that cannot be caught in the machine.
4.  Do not leave tools or other unnecessary objects near the device.
5. To prevent accidents, always make sure the safety cover are properly secured.
6. If the device is pneumatic, drain and clean the filter regulator periodically. Otherwise the water drainage will flow into the solenoid valve and/or air cylinder, causing trouble.
7. Always turn off the power before leaving the machine table.
8. If any trouble occurs, stop using the machine and turn off the power. Check, repair and/or perform other necessary procedures immediately.
9.  Pay close attention to the knife edges not to injure your hands and/or fingers.

CAUTION

⑤ Maintenance, check, repair

1. Authorized technicians who studied this instructions very carefully are allowed to maintain, check and repair the machine and device.
2. Perform routine daily maintenance and periodical maintenance by following this instructions.
3. Use Pegasus' genuine parts when repairing and/or replacing parts. Pegasus assumes no responsibility for accidents caused by improper repair/adjustment and/or use of parts which are not genuine. (original Pegasus parts)
4.  Do not modify the device yourself. Pegasus disclaims all responsibility for accidents caused by modification.
5. After maintaining, checking, and/or repairing the machine and device, always make sure that no trouble occurs when the power is turned on.
6. Before and after use, clean lint and any other dust from the machine and/or device. Otherwise it will cause trouble.
7. Make sure to replace the safety covers when you need to remove them for checking and/or maintenance.

Applications and performance

HG3A is the device that can be used for hemming bottoms of T-shirts and polo shirts.

The pneumatic hemming guide keeps the hem width constant during sewing, allowing the operator to concentrate on the sewing operation.

Thanks to this device, a difficult operation of hemming bottoms becomes easy and uniformly finished products are produced.

Installation

Mechanic level

Installing the parts and the air tubes

⚠ WARNING

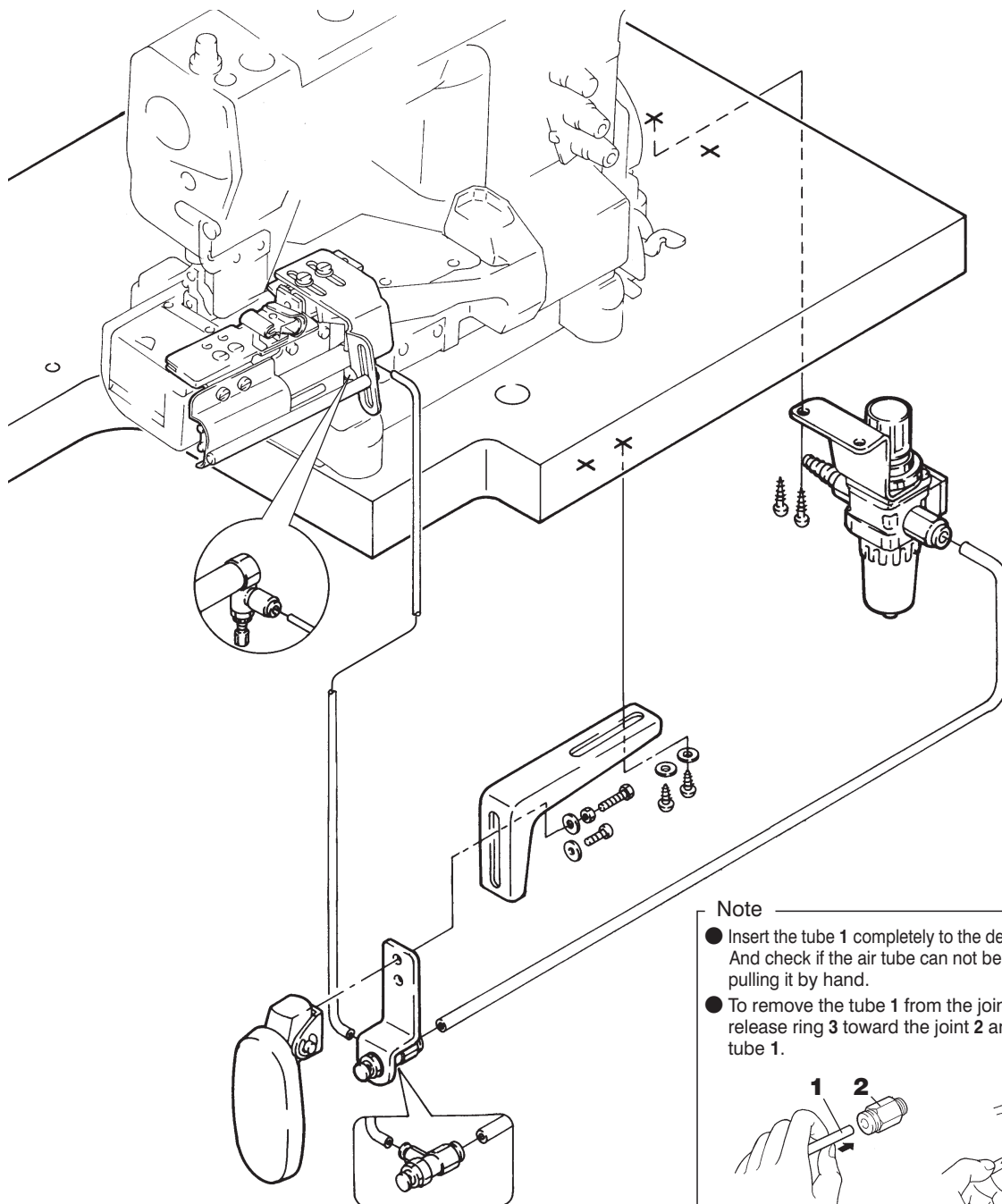
⊘ Improper piping of the air lines may cause a malfunction. To prevent accidents and damage to the machine, check all the air lines for correct piping.

⚠ CAUTION

⚠ Always turn off the power and shut down the air compressor first and authorized technicians are allowed to install the air tubes.

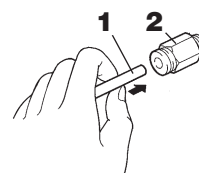
⚠ Before connecting to the air compressor (air source), all the air tubes should be connected completely.

Install the parts and the air tubes by referring to the illustration below.

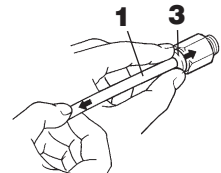


Note

- Insert the tube 1 completely to the depth of the joint 2. And check if the air tube can not be removed by pulling it by hand.
- To remove the tube 1 from the joint 2, push the release ring 3 toward the joint 2 and pull out the air tube 1.



To insert



To remove

Installation

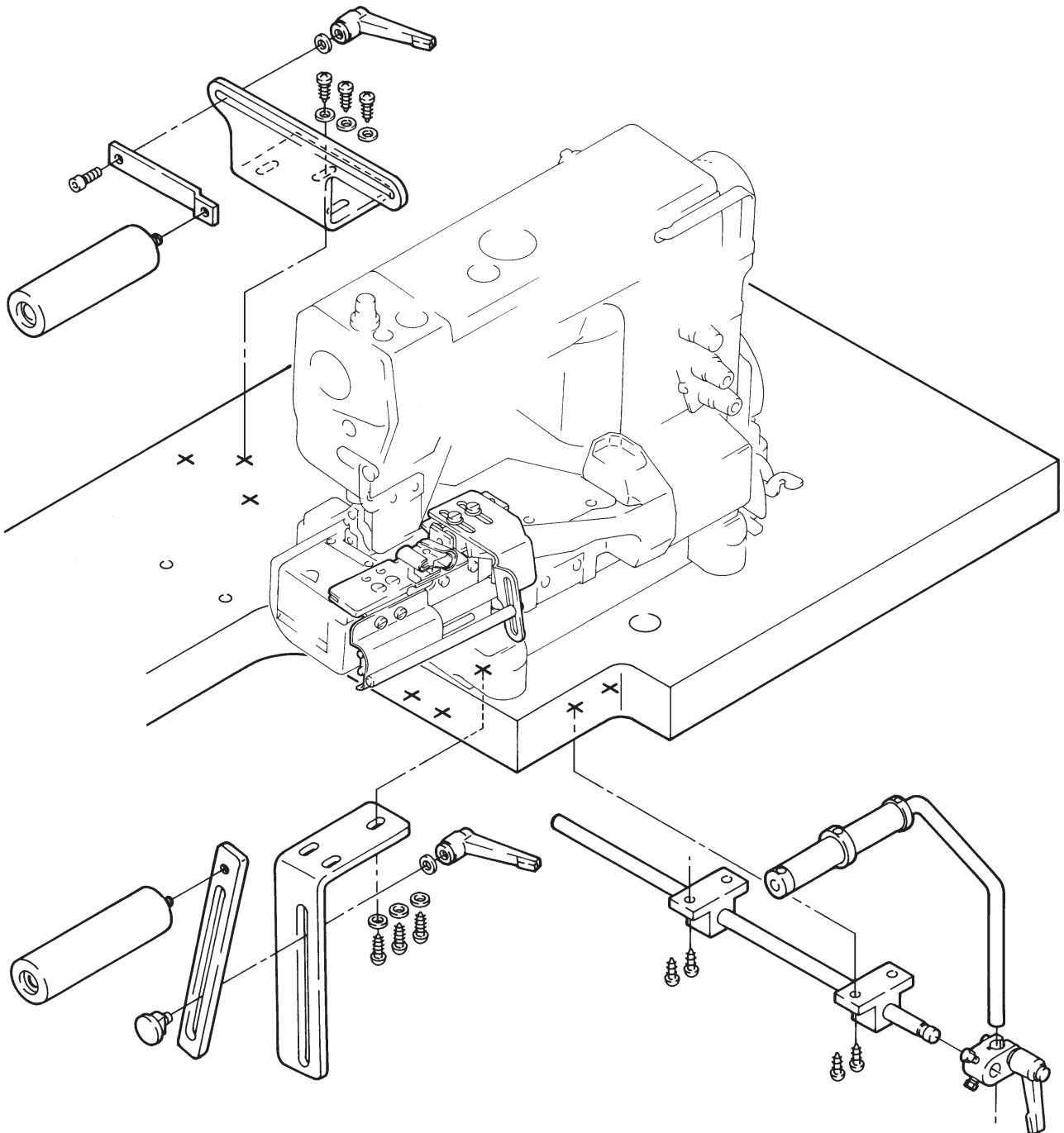
Mechanic level

Installing the guide rollers

⚠ CAUTION

Always turn off the power, unplug the machine and then authorized technicians are allowed to install the guide rollers.

Install the guide rollers by referring to the illustration below.




Basic adjustment

Mechanic level

Adjusting the guides

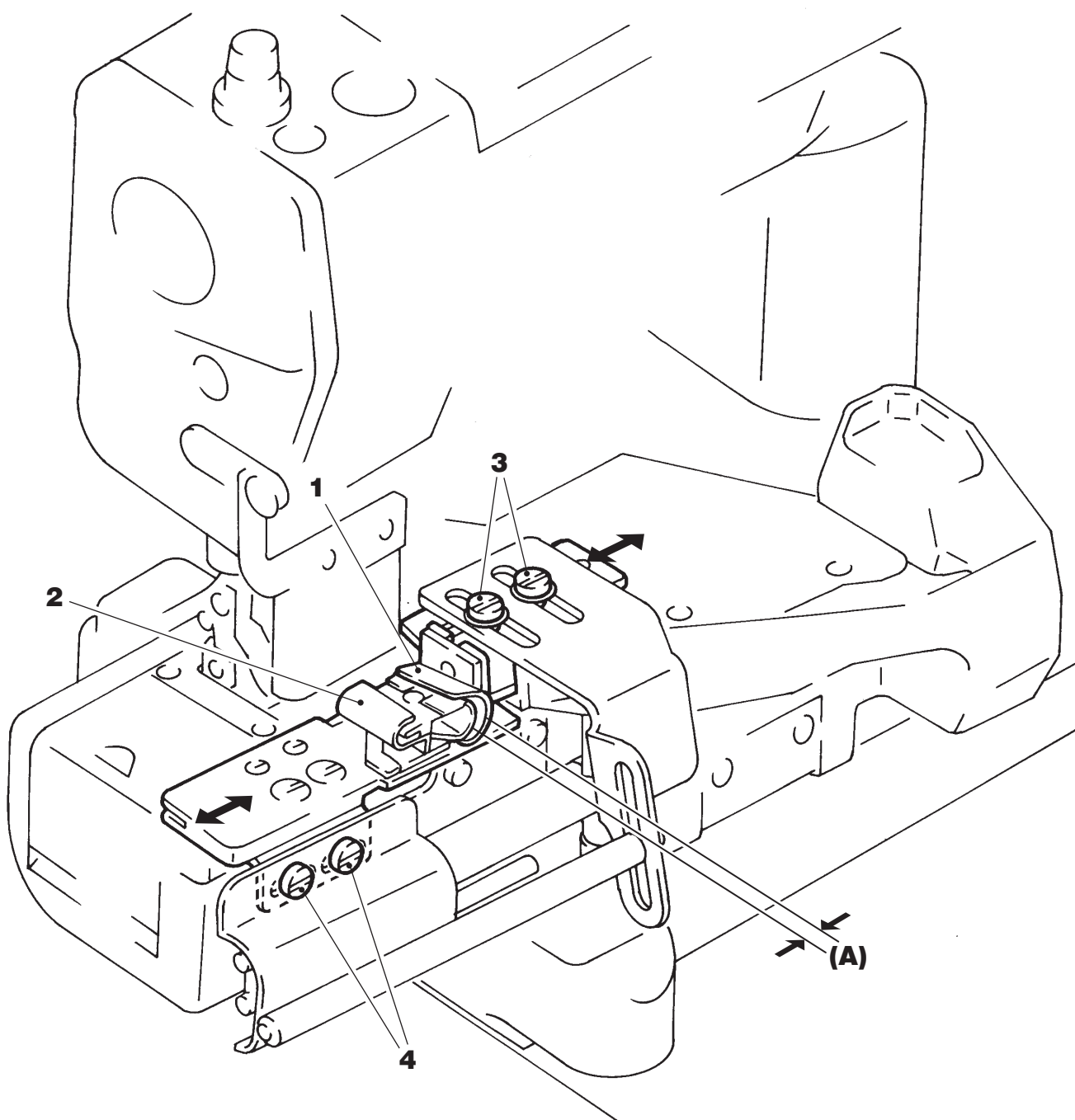
CAUTION

 Always turn off the power, shut down the air compressor first and then authorized technicians are allowed to adjust the guides.

To adjust right guide **1**, loosen screws **3**.

To adjust left guide **2**, loosen screws **4**.

- If distance **(A)** is too short, it may be difficult to insert the fabric to the guides.
- If distance **(A)** is too long, the hem may not be formed uniformly.



株式会社PEGASUS

株式会社PEGASUS

本社 〒 553-0002 大阪市福島区鷺洲 5-7-2

TEL : (06)6458-4739 FAX : (06)6454-8785

PEGASUS CO., LTD.

PEGASUS CO., LTD.

5-7-2, Sagisu, Fukushima-ku, Osaka, 553-0002, Japan

Phone : (06)6458-4739 Fax : (06)6454-8785

Cat. No. 9B3167000009 December 2023

©2023 PEGASUS CO., LTD.

The description in this INSTRUCTIONS is subject to change without prior notice for improvement.