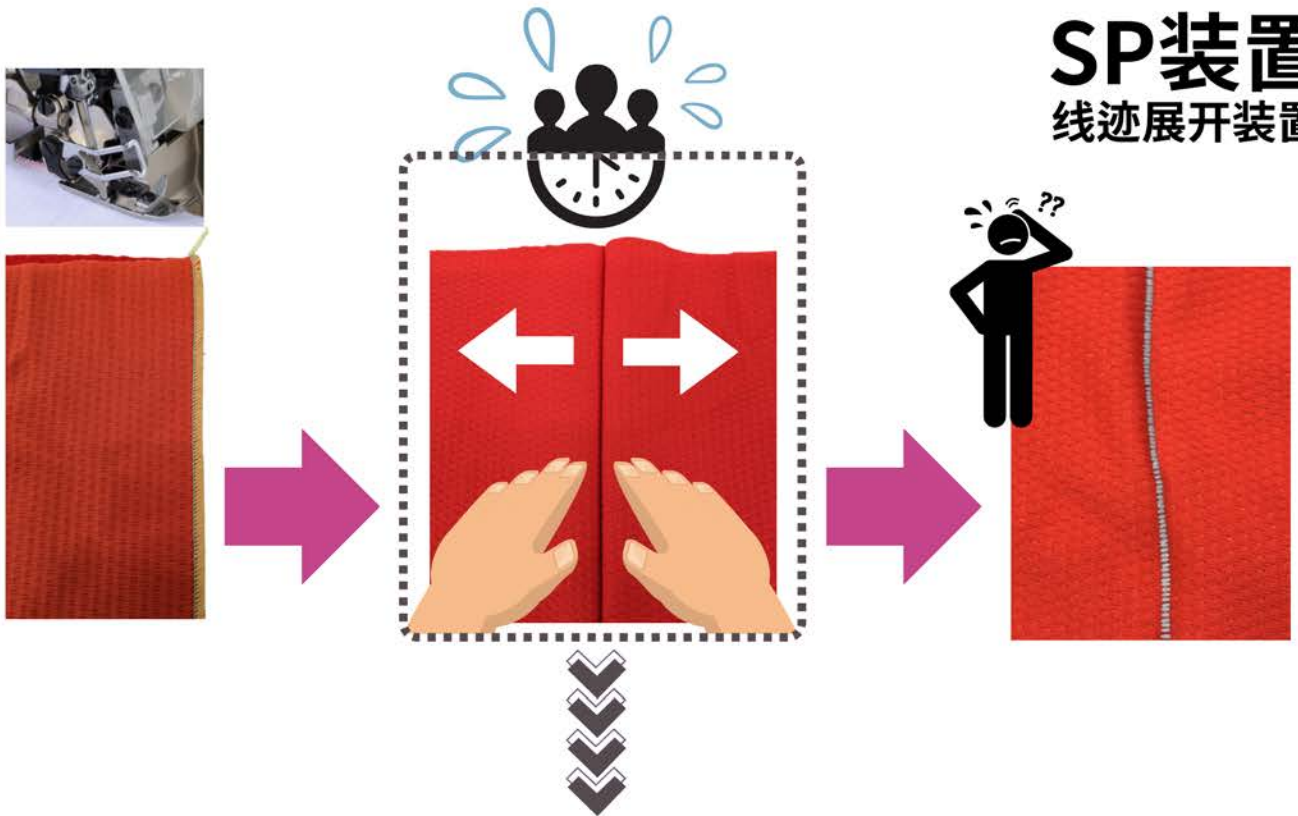


# SEAM OPENER DEVICE

SP装置  
线迹展开装置



 **スピーディーで安定した品質に!** 

The process of opening the fabric evenly after sewing can be completed quickly and evenly.  
M形縫和折边縫 縫制中不可或缺的縫后开线迹工序可快速





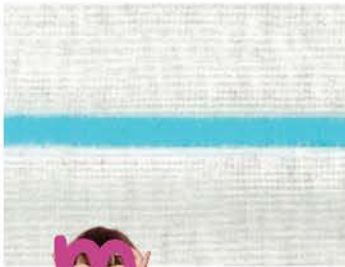
**肩継ぎ**  
Shoulder joint 肩部接缝

**袖付け**  
Sleeve attaching 袖部接缝

**脇縫い**  
Side seaming 腋部侧缝



**裾引き**  
Blindstitch Hemming  
折边缝



**MX5203-M03/323-4/KS0E/D232/Y2261**  
**M縫い仕様 1本針オーバーロックミシン**  
M-stitch specification, 1-needle, overedger machine  
M縫式样 单针包缝缝纫机



**PHN-200/EX5105-12/223N-4/KS379/PT**  
**裾引きユニット**  
(1本針シリンダーベッド型オーバーロックミシン搭載)  
Blindstitch Hemming Unit  
(equipped with 1-needle, cylinder bed, overedger machine)  
下摆折缝自动组装机 (搭载单针小方头式包缝缝纫机)

